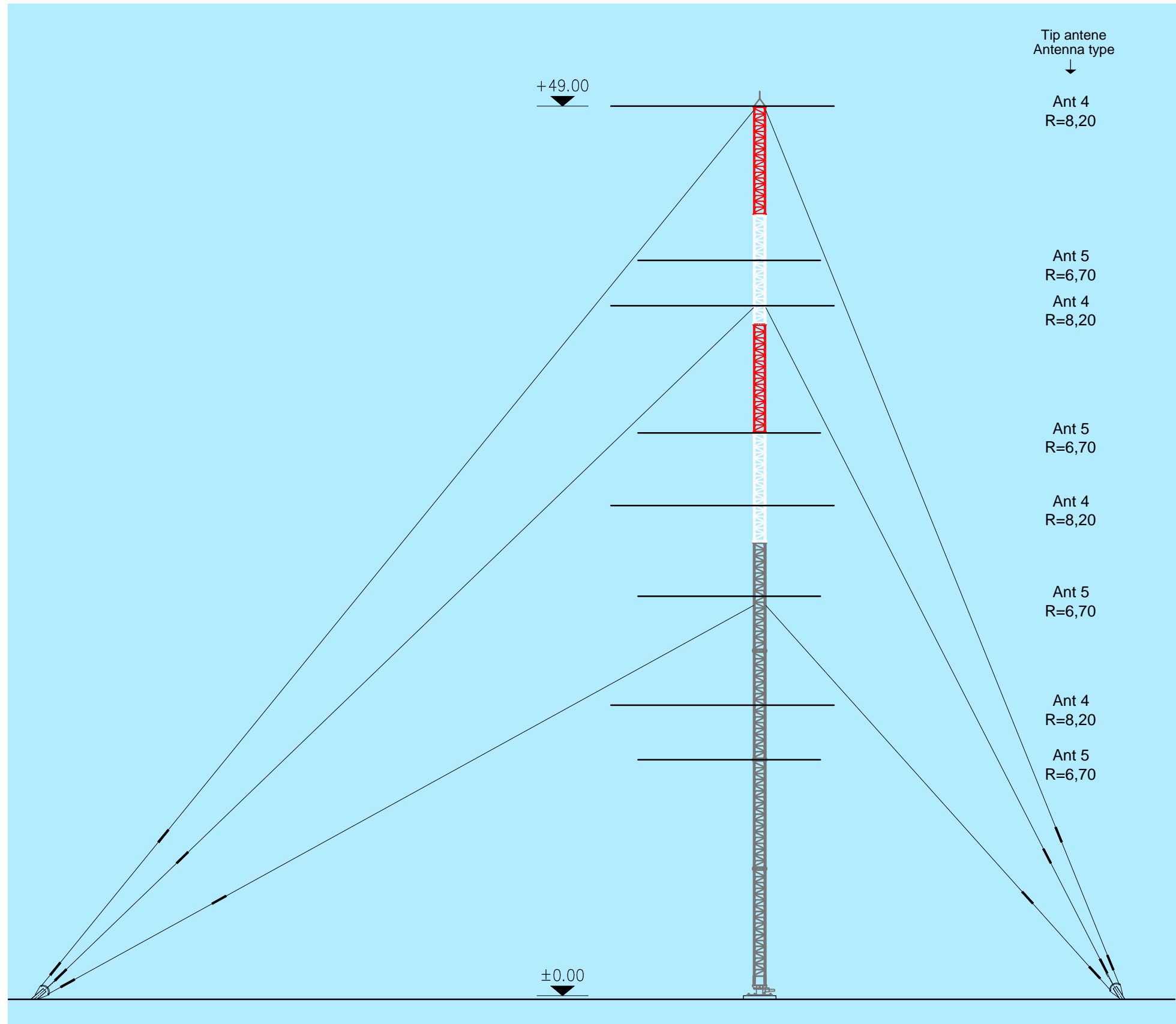


STUP ZA RADIO-KOMUNIKACIJE  
M 1:250  
RADIO COMMUNICATIONS TOWER  
Scale 1:250



MAST 49

RAVNINSKI PRIKAZ

PLAN VIEW

Osnovna brzina vjetra :  $v_{b0} = 25$  m/s s ledom  
Hrapavost terena : II.  
Koeficijent orografije :  $c_o=1.00$   
Tlak vjetra pri vršnoj brzini :  $q_p= 1.35$  kN/m<sup>2</sup>

Basic wind velocity :  $v_{b0} = 25$  m/s with icing  
Terrain roughness : II.  
Orography factor :  $c_o=1.00$   
Peak velocity wind pressure :  $q_p= 1.35$  kN/m<sup>2</sup>

Napomene:

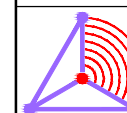
: ▼ relativna kota  
: Sve mjere u mm, visinske kote u m

Notes:

: ▼ relative height  
: All dimensions in mm, height in m

KATALOG STUPOVA ZA RADIOKOMUNIKACIJU

RADIO COMMUNICATION TOWERS CATALOGUE



Design:

TELE-PROJEKT d.o.o.

OIB: 65477918177

e-mail: tele-projekt@tele-projekt.hr