

STUP ZA RADIO-KOMUNIKACIJE
M 1:300
RADIO COMMUNICATIONS TOWER
Scale 1:300

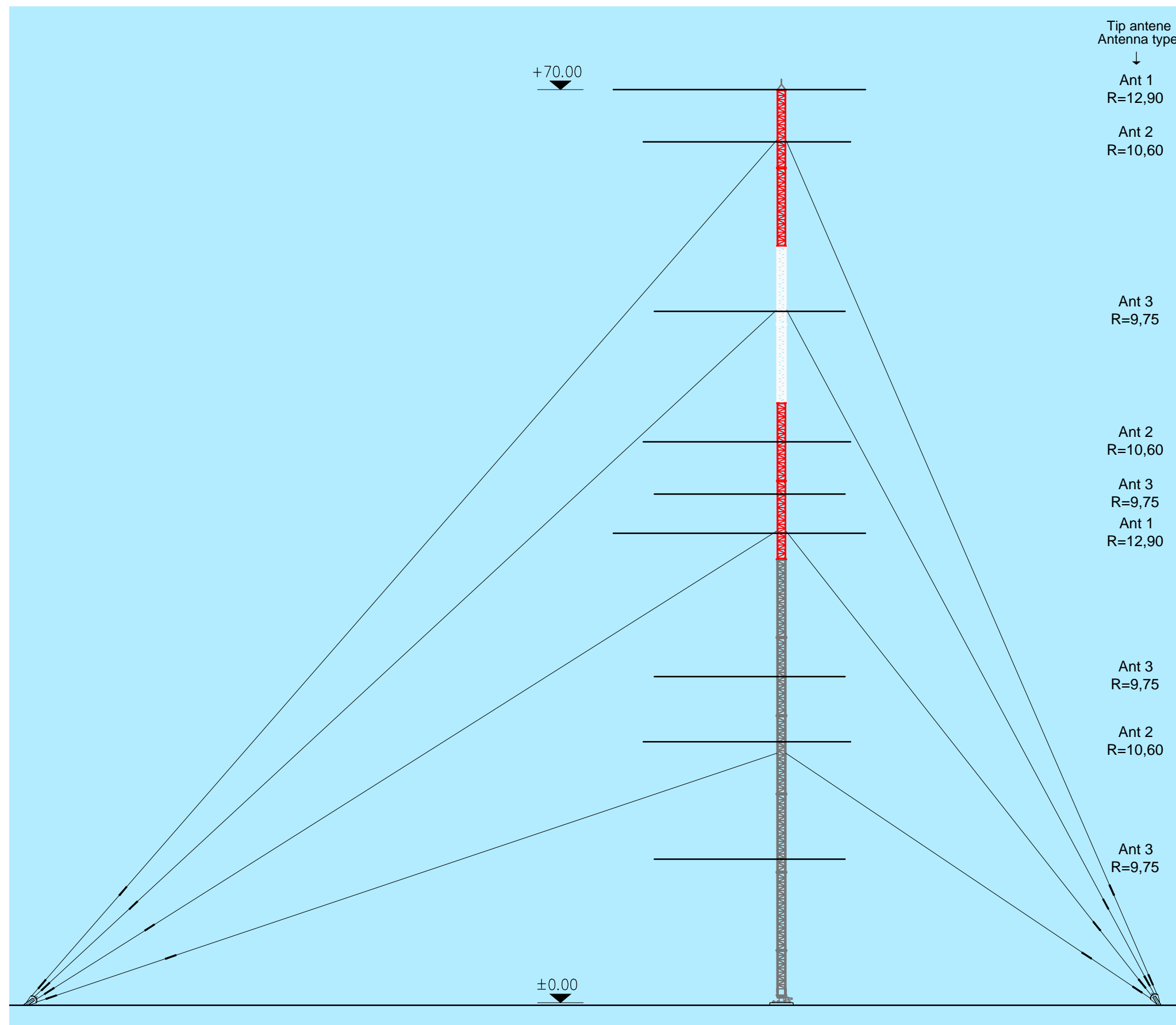
MAST 70

RAVNINSKI PRIKAZ

PLAN VIEW

Osnovna brzina vjetra : $v_{b0} = 25$ m/s s ledom
Hrapavost terena : II.
Koeficijent orografije : $c_o = 1.00$
Tlak vjetra pri vršnoj brzini : $q_p = 1.45$ kN/m²

Basic wind velocity : $v_{b0} = 25$ m/s with icing
Terrain roughness : II.
Orography factor : $c_o = 1.00$
Peak velocity wind pressure : $q_p = 1.45$ kN/m²



Napomene:

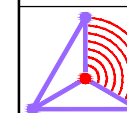
: ▼ relativna kota
: Sve mjere u mm, visinske kote u m

Notes:

: ▼ relative height
: All dimensions in mm, height in m

KATALOG STUPOVA ZA RADIOKOMUNIKACIJU

RADIO COMMUNICATION TOWERS CATALOGUE



Design:

TELE-PROJEKT d.o.o.

OIB: 65477918177

e-mail: tele-projekt@tele-projekt.hr